

# 5

# YEAR WARRANTY\*

## Synventive TTC Enhancements Hot Runner Control



### Power Priority®

- Average setpoint lowered
- “Strings” disappeared
- Secondary process with infrared heater eliminated



### Sequential Valve Gate Controller (SVGC)

- Standalone or integrated with hot runner controller
- Open and close 3 times
- Digital or analog inputs to trigger
- Scan rate 1 mSec (8 outputs)



### Leak Detection

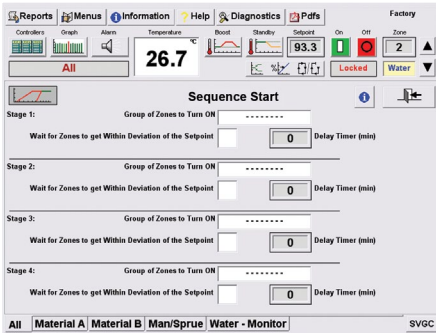
- Lower maintenance costs
- Improved up-time

\* TTC Touchscreen interface has 2-year warranty

**Synventive**  
molding solutions

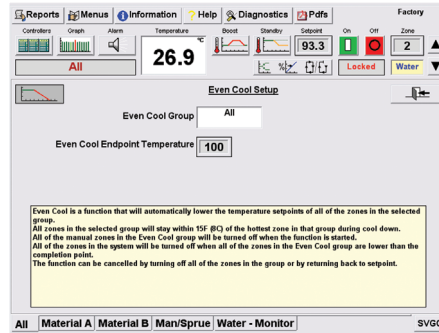
# 5

# YEAR WARRANTY\*



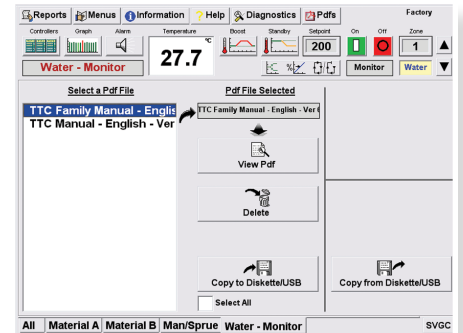
## Sequence Start

- Control heat expansion
- Improve hot runner sealing



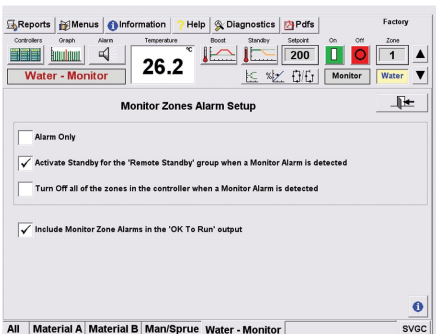
## Even Cool

- Control cooling contraction
- 8 °C tolerance



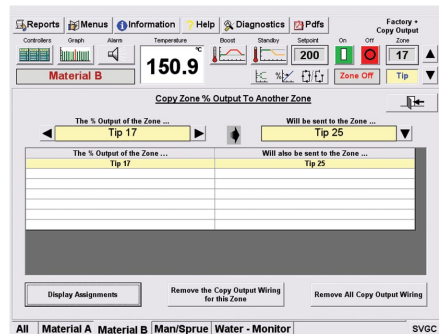
## PDF Viewer

- Store and view any PDF
- Document center for work cell



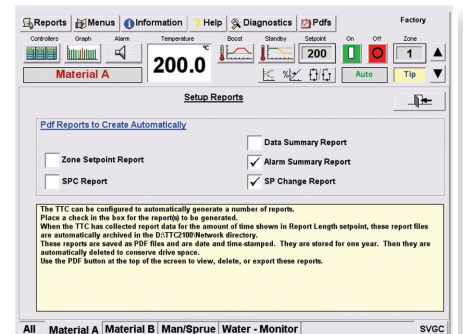
## T/C Monitoring

- Water interlock with controller and machine
- Prevent damage



## Copy Output

- Equalize manifold heat
- Actual temperature displayed for both zones (if available)



## Alarm Reporting

- 24 hours per report
- Automatically manages 1 year
- Browse for report by date and view in production
- What happened at 2 am, three days ago?



### Synventive Molding Solutions

✉ 10 Centennial Drive  
Peabody, MA 01960  
USA  
☎ +1 800.367.5662  
☎ +1 978.750.8065  
☎ +1 978.646.3600  
✉ info@synventive.com

### Synventive Molding Solutions GmbH

✉ Heimrodstraße 10 64625 Bensheim  
P.O. Box 3123 64615 Bensheim  
Germany  
☎ +49 (0)6251 9332 0  
☎ +49 (0)6251 9332 90  
✉ infohrde@synventive.com

### Synventive Molding Solutions (Suzhou) Co., Ltd.

✉ 12B Gang Tian Industrial Square  
Suzhou Industrial Park, 215021  
China  
☎ +86 512 62838870  
☎ +86 512 62838890  
✉ infohrcn@synventive.com

### Your Local Representative